

PREVENTION OF ADOLESCENTS' SUICIDAL IDEATION AND SUICIDAL BEHAVIOUR

*Lilian Zöllner, Ph.D.
Centre for Suicide Research, Denmark*



PROBLEM

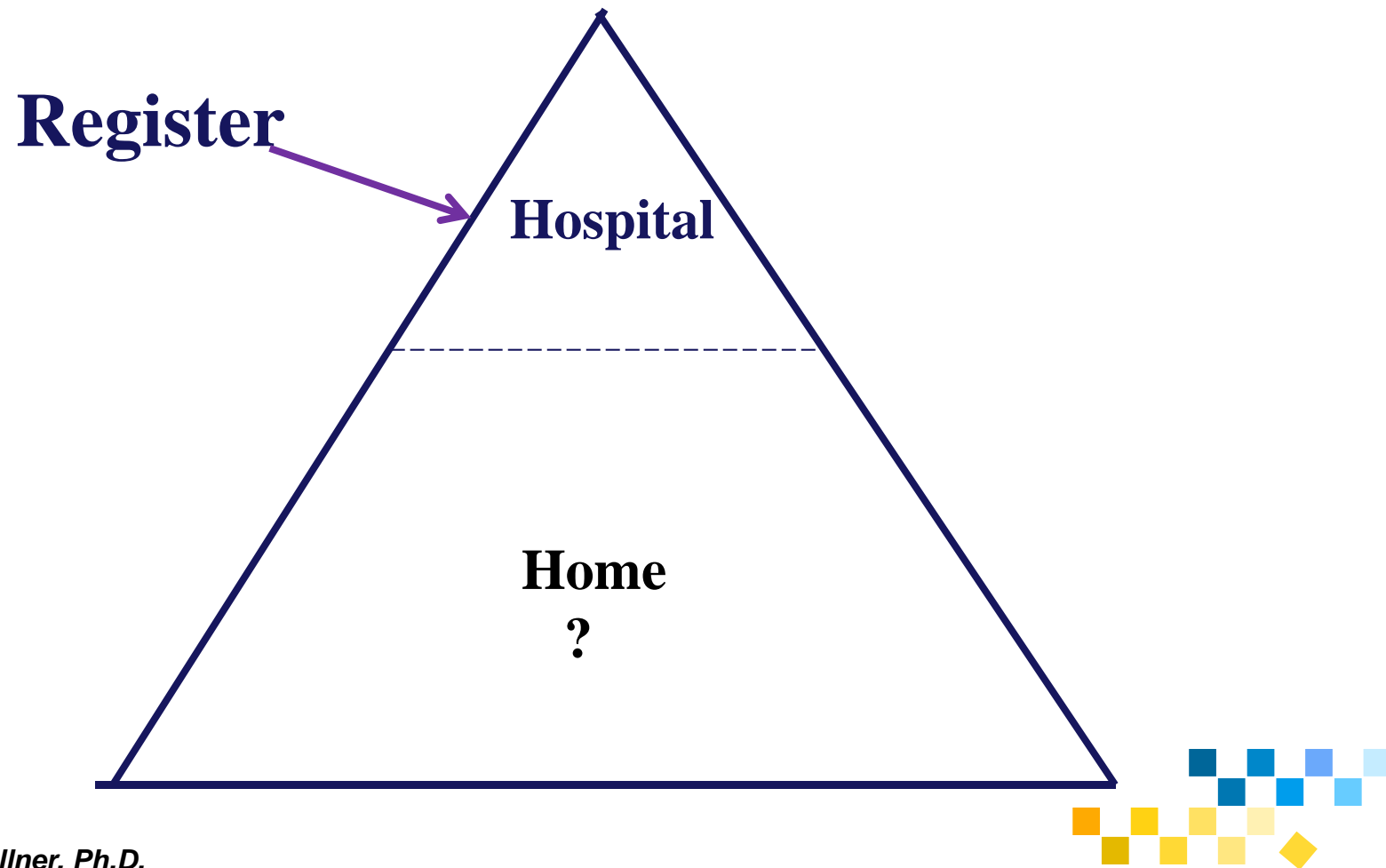
- **The 1990s have seen a marked increase in the rates of attempted suicides among girls between the ages of 15 to 19. Studies seem to show that especially among teenagers there are considerable numbers of suicide attempts which are not registered.**

Lilian Zøllner, Ph.D.

Centre for Suicide Research, Denmark



Research 2002-2014



Lilian Zøllner, Ph.D.

Centre for Suicide Research

Research

2002 CASE

Students (13-16 years) N=5227

Parents N=4019

Teachers N=305

Lilian Zöllner, Ph.D.

Centre for Suicide Research



Research 2002-2014

Vulnerable youths

Serious thoughts of self-harm

Self-harm

Suicide attempt

Lilian Zöllner, Ph.D.

Centre for Suicide Research



PREVENTION

	N	T %	S %
2002	5227	31.5	10.4
2004	649	13.6	8.9
2006	3275	17.4	13.5

PUBLICATIONS

SEMINAR

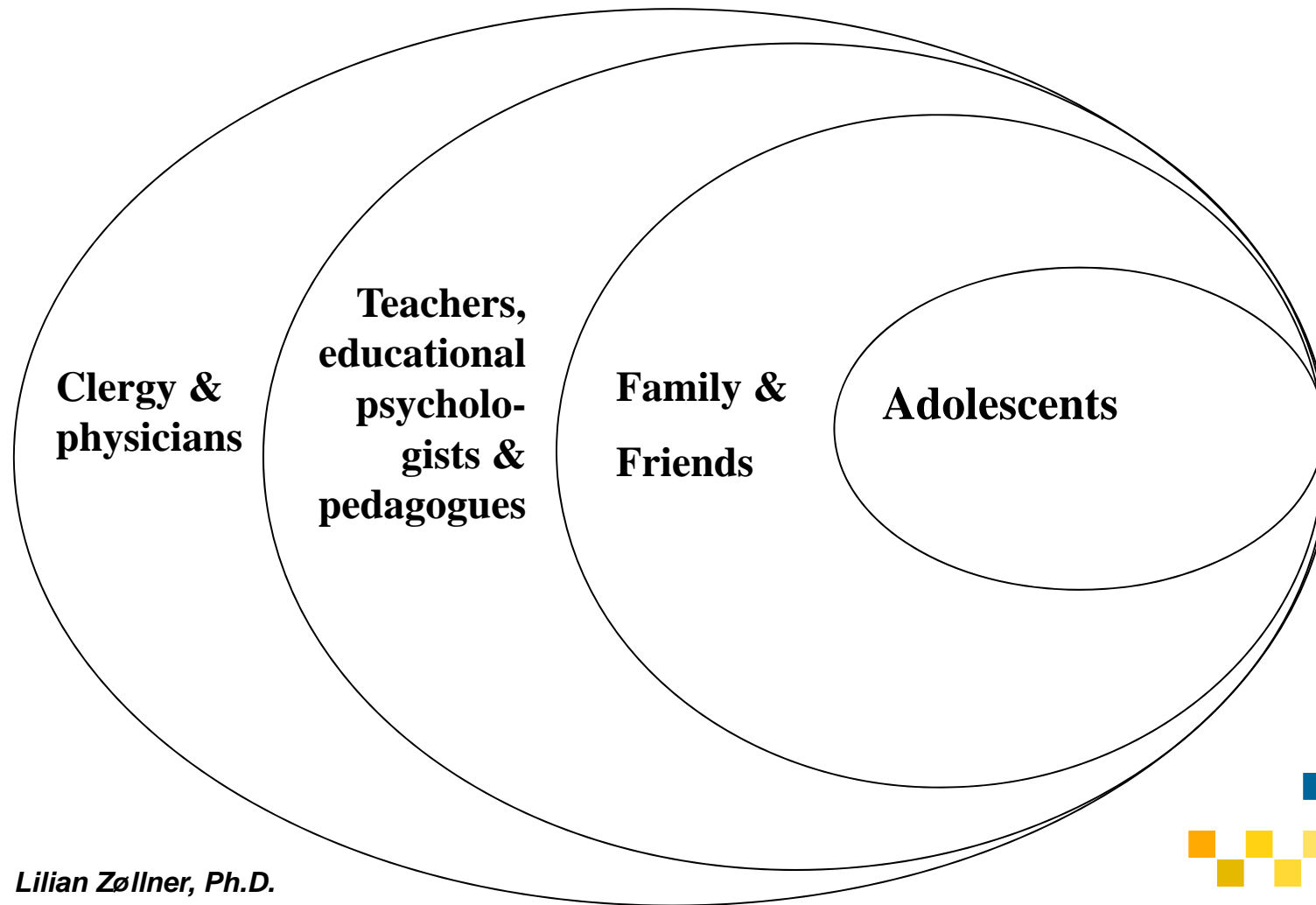
MEDIA



Lilian Zøllner, Ph.D.

Centre for Suicide Research

Significant others



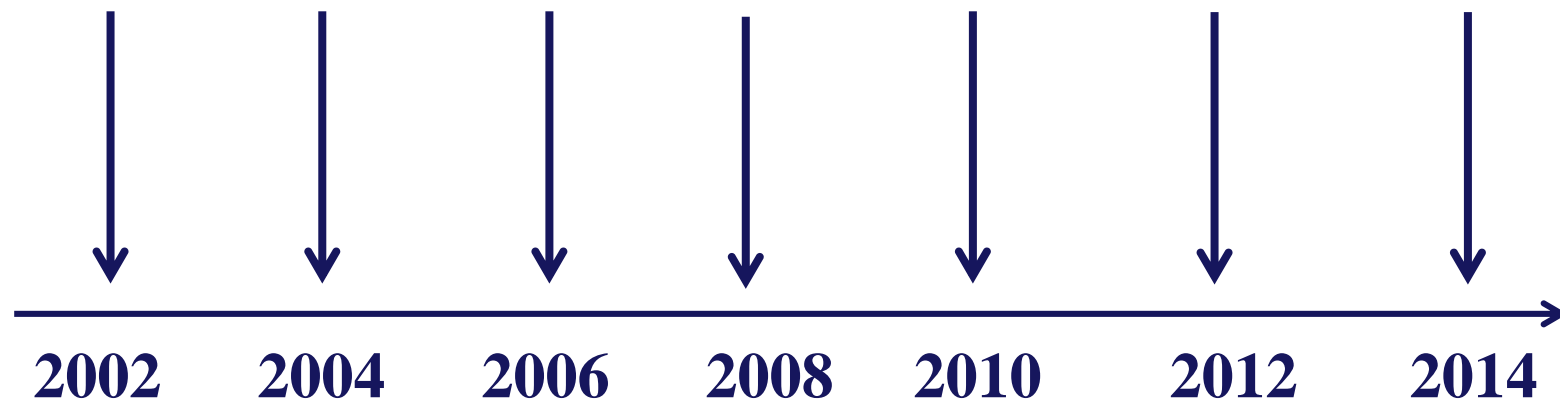
Lilian Zøllner, Ph.D.

Centre for Suicide Research



Research 2002-2014

Problems (13-19 years old)

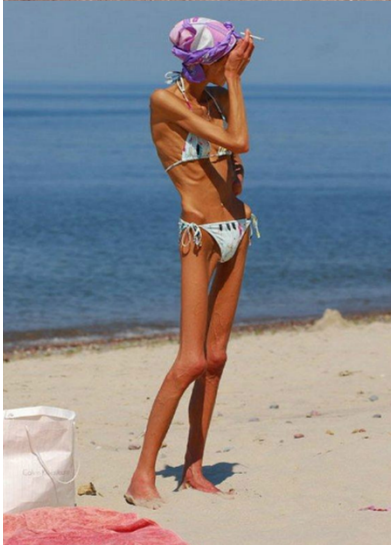


Lilian Zøllner, Ph.D.

Centre for Suicide Research



Problems?



	N=	SERIOUS THOUGHTS OF SELFHARM	SELF HARM
2006	3275	17.4%	13.5 %
2008	349	20.1%	15.8 %



PREVENTION TRAVELLERS

Centre for Suicide Research implement a Danish version of the TRAVELLERS (from New Zealand). TRAVELLERS is a school-based intervention programme designed to enhance protective factors for young people experiencing change, loss and events of transition and showing early signs of emotional distress.

Lilian Zøllner, Ph.D.

Centre for Suicide Research, Denmark



PREVENTION

2010 - 2014

**INFORMATION TO
HEADMASTER
PARENTS
TEACHERS
SOCIAL TEAM
PUBLICATION
SEMINAR
MEDIA**



Lilian Zøllner, Ph.D.

Centre for Suicide Research

	N=	SERIOUS THOUGHTS OF SELFHARM	SELF HARM
2002	5175	32,5 %	10,4 %
2004	649	13.6%	8.9 %
2006	3275	17.4%	13.5 %
2008	349	20.1%	15.8 %
2010	3547	13.3%	13.7 %
2011	3249	18.4	16.0%



REASONS FOR **LIVING**



Lilian Zøllner, Ph.D.

Centre for Suicide Research